

1 Basement Plan
1/4" = 1'-0"

No.	Date	Revision

Project No.
16022
Sheet No.
A100
Date
02/17/2016

R. Gregory Garner
MO Architect License No. A-006443
Expires: 12/31/18
Archimages
architecture | interiors
Archimages, Inc. # 000550
143 West Clinton Place St. Louis, Missouri 63122
www.archimages-atl.com P: (314) 965-7445 F: (314) 965-7477

430 Broadway
430 Broadway Street
Cape Girardeau, MO 63701

[Consultants]

BASEMENT PLAN

Checker (Checked by)
Author (Drawn by)

2/17/2016 2:49:41 PM
C:\Users\ajohnson\ARCH\Documents\16022_430 Broadway_R15.dwg



1 Level 01 Plan
1/4" = 1'-0"

R. Gregory Garner
MO Architect License No. A-006443
Expires: 12/31/18

Archimages
architecture | interiors
Archimages, Inc. # 000520
143 West Clinton Place St. Louis, Missouri 63122
www.archimages-atl.com P: (314) 965-7445 F: (314) 965-7477

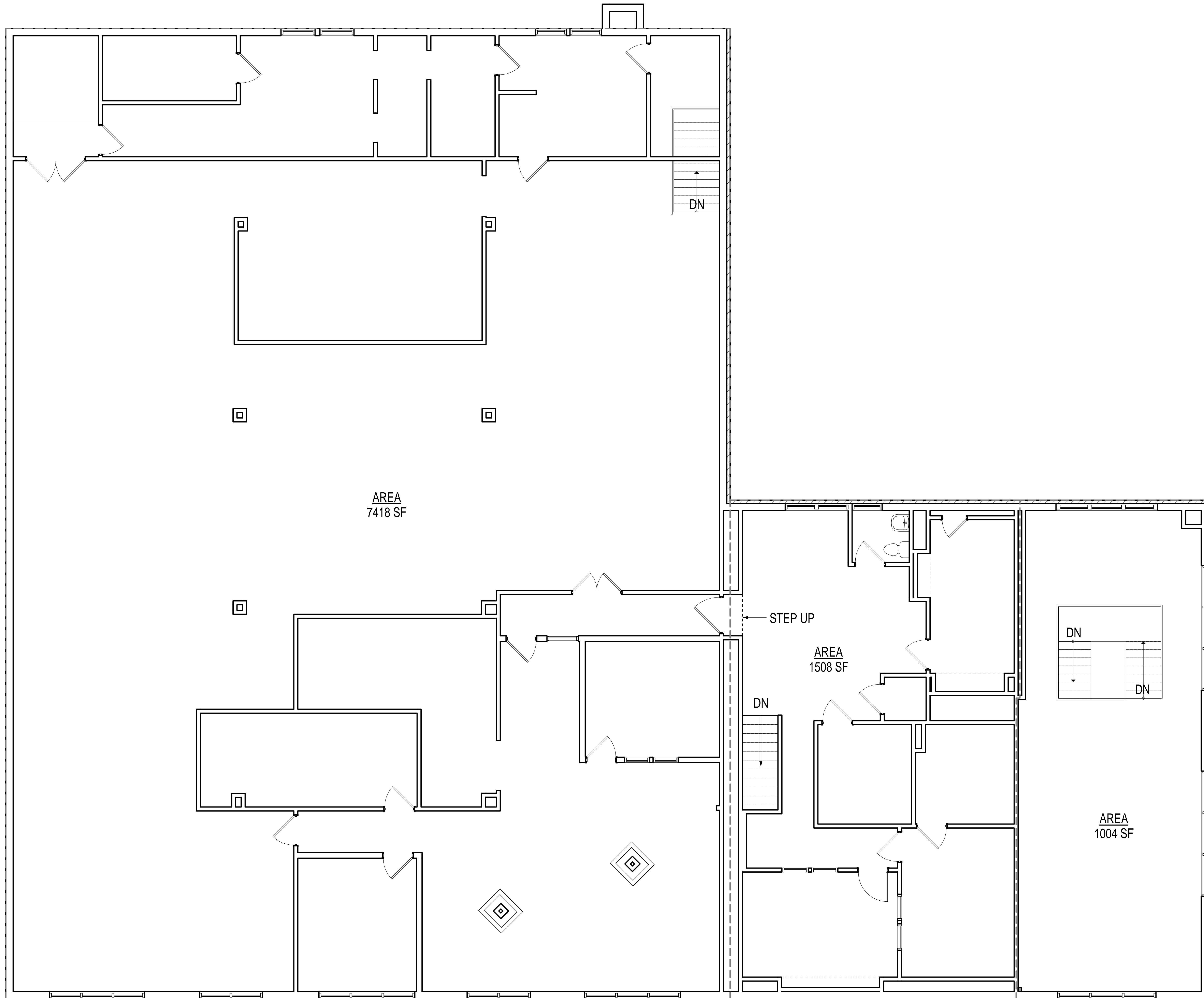
[Consultants]

430 Broadway
430 Broadway Street
Cape Girardeau, MO 63701

No.	Date	Revision

Project No.
16022
Sheet No.
A101
Date
02/17/2016

FIRST LEVEL PLAN



1 Level 02 Plan
1/4" = 1'-0"

No.	Date	Revision